

Annual Summary

LSU

SU25 - SP26



Office of Undergraduate Research

The LSU Office of Undergraduate Research is proud to support undergraduate student participation in faculty-mentored research and professional-level activities each year.

Our existing programming has continued to see high-levels of participation and engagement. From students applying to funding opportunities like Project Grants and Travel Stipends; students presenting their research at the Summer Undergraduate Research Forum and Discover Day; and spreading the word about research at LSU through social media, newsletters, and on-campus events such as the Welcome Week Undergraduate Research Info Fair, undergraduate research at LSU is as strong as ever.

This year, our office hit milestones in offerings and participation:

NEW FRONTIERS



Louisiana Undergraduate Research Association (LaURA)

Posters at the Capitol

Universities across the state select students to present their research to Louisiana legislators at the Capitol building.

June 9, 2025

7 LSU students

selected by our office.

March 9, 2026*

9 LSU students

selected by our office.

*First day of the 2026 Regular Legislative Session.

The House of Representatives extended a declaration of "Posters at the Capitol Day".

LSU Explorers Program for Freshmen

Received record number of applications in it's 4th year running

F25 applications: **100** → up from 58 in F24

Students accepted: **26**

This demand led to the inception of a second cohort

SP26 applications: **53**

Students accepted: **22**

LSU

EXPLORERS



Center for Improvement of Mentored Experiences in Research (CIMER) curriculum

Mentor Training Workshops



Faculty workshops offered:

- Aligning Expectations - 18 attendees
- Maintaining Effective Communication - 15 attendees
- Promoting Professional Development - 7 attendees
- Assessing Understanding - 8 attendees
- Complete Curriculum - 30 attendees

Graduate Student workshops offered:

- Complete Curriculum - 22 attendees



To further recognize and disseminate research conducted by undergraduates at LSU, our office now has two collections in the

LSU Scholarly Repository:

- **Discover Day Awardees**
- **Distinguished Undergraduate Researcher**

Eligible work that has been approved for publication in the repository is preserved and openly accessible.



Scholarly work by students earning the Distinguished Undergraduate Researcher designation will be published in the repository. We had **68 awardees** in the Spring 2026 graduating class!



lsu.edu/our



@lsu_our
3,025
followers as of
5/25/26

Contact us: lsuour@lsu.edu
332 Hatcher Hall,
Baton Rouge, LA 70803

A huge milestone this year was changing from the "LSU Discover Undergraduate Research Program" to the

LSU Office of Undergraduate Research (LSU OUR)

“ This change reflects the growth of our unit over the years as we have developed numerous programs, events, and resources for students. ”

- Sarah Ferstel, Director, LSU Office of Undergraduate Research

Spring 2014
First LSU Discover Day conference held

Spring 2019
First Distinguished Undergraduate Researcher awardees honored at graduation

Fall 2013
LSU Discover Program created through the QEP

2018
LSU Discover made permanent under the Office of Academic Affairs

Spring 2025
New office name publicly announced

RECORD NUMBERS



72 students awarded

Distinguished Undergraduate Researcher medals

August 2024: 5 | December 2024: 4 | May 2025: 63

471 registered student presenters

at the 12th annual LSU Discover Day, April 25, 2025

382 LSU undergraduates | 89 students from other schools



18 students funded

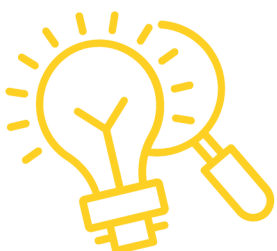
to present at the National Conference on Undergraduate Research (NCUR)

April 7 - 9, 2025 in Pittsburgh, PA

Read about the students' experiences presenting at NCUR:



Connecting students to research opportunities & resources through...



Website lsu.edu/our	43,600 views	Instagram @lsu_our	2,365 followers
Mentor Database	266 faculty profiles	Twitter (X) @lsu_our	1,114 followers
Digital Newsletter	10,656 subscribers	LinkedIn	896 followers

OUR Students



13 students received Project Grants to conduct faculty-mentored research or creative projects for a total of **\$49,520 in funding awarded**.

Summer 2024: 6 students funded

Fall 2024-Spring 2025: 7 students funded



100 summer researchers presented their work at the 29th annual Summer Undergraduate Research Forum on August 2, 2024.

127 students across **23 programs** were registered for summer research programming through our office.



We welcomed **25 new freshmen** into the Explorers Program for Fall 2024-Spring 2025.

58 students applied, a significant jump from 37 applicants the previous year.



Discover Undergraduate Research Program

Annual Summary

SU23 - SP24

2,338

Program Activity Engagement

of undergraduate students through LSU Discover workshops, programs, conferences, and funding

QUICK STATS

379

Discover Day Presenters

246

Faculty Mentor Profiles

8,903

Newsletter Subscribers

57

Research Ambassadors

34

Travel Stipends

56

Distinguished Researcher Awards

Staff



and Advisory Board

made up of Associate Deans, Faculty, and Directors from each senior college, including Honors & Vet Med

New this year:

Administration of REU and summer undergraduate research program support:

- **116 students registered**
- Hosted orientation, welcome dinner, weekly workshops, and social events
- Summer Undergraduate Research Forum - **89 student presenters**

Raised funds during LSU Giving Day - **\$460**

- \$370 for Project Grants
- \$95 for Travel Stipends

Collaborated with the **LSU Museum of Art** to create a funded **summer project program**

Affiliated Programs

Gulf Scholars Program

16 students funded

Special Collections Summer Program

2 students funded

PFLR

244 awarded

Operate within LSU Discover

Distinguished Undergraduate Researcher

216 enrolled

Freshmen Explorers

25 students enrolled

Project Grants

24 students funded

Directly funded & operated by LSU Discover

Honors College

Beckman Scholars Program

MARC Program

McNair Research Scholars

Additional partnerships



lsu.edu/discover

@lsudiscover

Instagram

1,982 followers

Twitter

1,125 followers

Facebook

845 followers

LinkedIn

657 followers